

ArtixScan DI 7200S

Super-Speed

Automatic Sheetfed Document Scanner



- A4**
Duplex
Scanning
- 2**
CCD
- Ultrasonic
Double-Feed
Detection
- 100** | **200**
ppm | ipm
Color
- SuperSpeed
USB
- ADF
100
Pages
- 5000**
Scans
Daily Duty
Cycle
- 300cm**
Long Page
- Quick
Scan
Button
- USB**
Hub
- Plastic
Card
Scan

ArtixScan DI-series

ArtixScan DI 7200S

Fast Scan, Low Noise and Tidy Output in A4 Size

Under a fast scan performance of 100 ppm / 200 ipm, output images of the ArtixScan DI 7200S are still clear and distinct. With designs of low-noise and tidy paper-output, you are able to enjoy a quiet and orderly working environment.

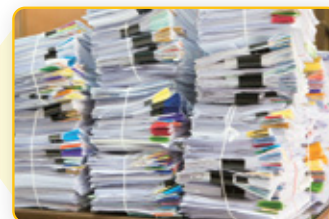
100ppm
200ipm



Duty Cycle of 5000 Pages Per Day

The document feeder of the ArtixScan DI 7200S supports duty cycle up to 5000 pages per day, displaying a stable operation ability of the device and satisfying users' demands towards large volumes of scan documents at the same time.

5000
Pages / Daily



Ultrasonic Double-Feed Detection

A built-in ultrasonic sensor lets the scanner detect the thickness between overlapping pages and prevent multiple pages from being fed together while documents are scanned through the ADF. If the double-feed does happen, the scanner will stop immediately to avoid the consequence of paper jams or paper missing.

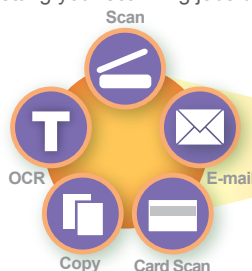
Straight Channel Design Makes Paper Feed Smoothly and Supports Card Scan

Different from the design of U channel, the ADF with a design of straight channel enhances efficiencies of paper feed and widens using ranges of scan materials; thus, the scanner can be used more broadly. Featuring the technology of paper separation, the ArtixScan DI 7200S supports scanning of fed-in papers in mixed sizes and thicknesses, making a scan process more efficiently.



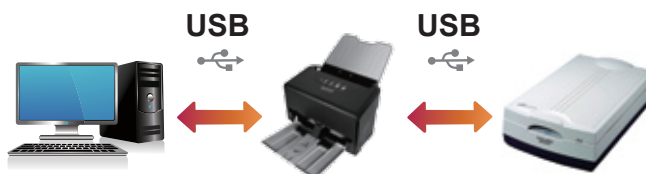
5 Programmable Function Buttons

The scanner is equipped with easy-to-access function buttons and a LED display, which can be used to automate a number of predefined scan jobs, such as scanning to a file, sending images to your printer or E-mail accounts, and scanning for OCR. By just pressing a button, you can activate the function associated with it configured through the software, simplifying your operations and getting your scanning jobs done quickly.

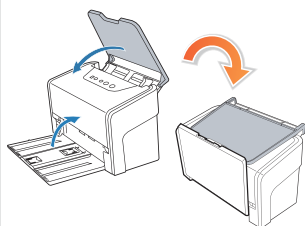


Additional USB Hub Ability

With an embedded USB hub, the ArtixScan DI 7200S can be used as a single USB port, allowing you to connect an extra Microtek's scanner with the computer.



Foldable Trays Perfect for Tight Spaces



The ArtixScan DI 7200S is not only with an elegant appearance, it is also bearable and durable. Its foldable trays brings you a lot of convenience when using it in a limit space, and it also makes storing and handling more easier when the scanner is not in use.

Specifications

Scanner Type Desktop sheetfed color scanner	Scanning Area Max : 8.5" x 118" (216 x 3000 mm) Min : 1" x 1" (25.4 x 25.4 mm)	Feed Roller Life 100,000 scans
Image Sensor CCD (x 2)	Scanning Speed 100 ppm (Simplex) / 200 ipm (Duplex), at 200 dpi, A4/color, grayscale, line art	Software Driver TWAIN
Light Source LED	Paper Weight 8 to 32 lbs (30.08 to 120.32 g/m ²)	Dimensions (L x W x H) 7.08" x 12.60" x 7.87" (180 mm x 320 mm x 200 mm)
Color Modes 24-bit color, 8-bit grayscale, 1-bit b&w (external)	Paper Size Max: 8.85" x 118" (225 x 3000 mm) Min: 2.75" x 3.149" (70 x 80 mm)	Weight 9.26 lbs. (4.2 kg.)
Interface SuperSpeed USB (USB 3.1 Gen 1)	Duty Cycle 5,000 pages per day	Environment Operating temperature: 41° to 104°F (5° to 40°C) Relative humidity: 10% to 85%
Resolution 600 dpi	Separation Roller Life 150,000 scans	
Feeder Capacity 100 sheets		

System Requirements

- CD/DVD-ROM drive (for installing software)
- Color display with 24-bit output capability
- 1 GB RAM or more (2 GB is recommended)
- Intel Core2 Duo Processor at 2.1 GHz or above PC with a SATA2/SATA3 at 7200 rpm HDD or SSD (recommended) ; Intel-Based Mac computer with built-in USB port
- Windows 7, 8 or 10; Mac OS X 10.10 or later

Included Software

- Microtek® ScanWizard™ DI (PC)
- Microtek® DocWizard (PC)
- Microtek® ScanPotter (MAC)
- ABBYY FineReader® Sprint OCR (PC/Mac)
- Adobe® Acrobat® Reader (PC/Mac)

For more details on product, please contact your local Microtek sales or dealers.