



CopiBook V-Shape A1 & A2

*Preserve the authenticity
of precious documents*



Digibook

Heritage digitization



CopiBook V-Shape A1 & A2

Scanners with matrix sensor

Unique Book cradle

Opening angle **120°**
110° option available

✓ *Binding protection*

Automatic glass opening and closing
Motorized platens

✓ *Ergonomic scanning*

Secure pressure adjustment system

✓ *Document preservation*

Book thickness and weight: up to 20 cm thick
without glass and up to 20 Kg

✓ *Adaptable to various document types*



Optimized Lighting system

LED lighting **without UV and IR emissions**

✓ *Document preservation*

Light **diffuser**

✓ *No dazzling light for operators*

Outstanding *image quality*

9 cm depth of field

✓ *Extended sharpness to capture every detail*

2 cameras available

✓ *Configurations to suit every need*



EAGLE Camera

600 dpi A2 / 400 dpi A1
2 x 71 Mpixels
BoostPic



ROCK Camera

800 dpi A2 / 600 dpi A1
2 x 156 Mpixels
BoostPic and TrueColor™

CopiBook V-Shape is compatible with the following standards **ISO 19264-1/B**, **Metamorfoze Light** and **FADGI 3*** (EAGLE and ROCK cameras).



High level of *productivity and ergonomics*

Scan time : <1s à 600 dpi

Cycle time : <9s à 600 dpi

✓ *Identical scan times for all formats*

Real-time preview

Automatic calibration

✓ *Saves time at every stage of digitization*

Scan Format

A2: Up to 420 x 594 (mm) / (16.5" x 23.4")
with glass

A1: Up to 594 x 841 (mm) / (23.4" x 33.1")
with glass

BoostPic

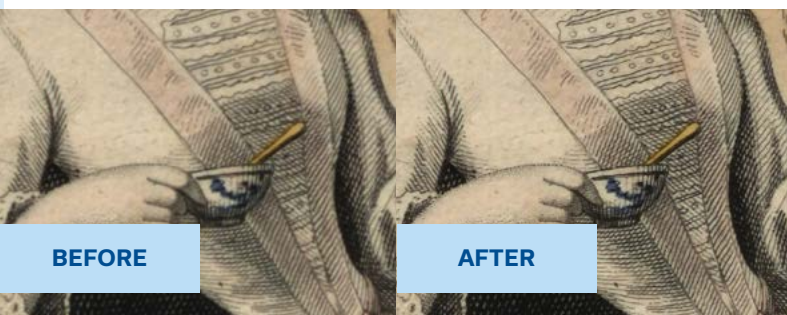
Make the finest details

Better sharpness / Lower-noise / Higher-contrast



True to life color digitization

No moiré pattern



BEFORE

AFTER



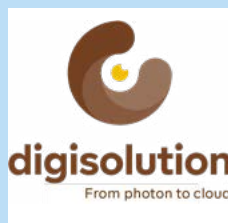
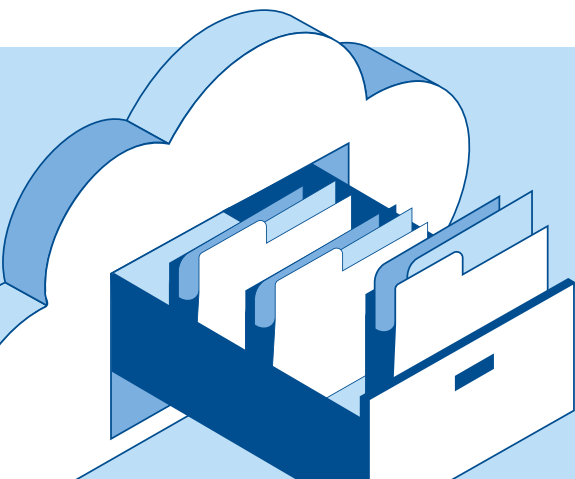
BEFORE

AFTER

CopiBook V-Shape A1 & A2

Technical specifications

TYPE	2xA3 format planetary book scanner	2xA2 format planetary book scanner
CAMERA	EAGLE with 71 MPixels matrix sensor, Or ROCK camera with 156 Mpixels Autofocus No mechanical shutter Color, Grayscale, Black & White	
OPTICAL RESOLUTION	600x600 dpi EAGLE camera 800x800 dpi ROCK camera	400x400 dpi EAGLE camera 600x600 dpi ROCK camera
SCAN TIME	< 1 sec at 600 dpi in color	
CYCLE TIME	< 9 sec at 600 dpi in color	
FILE FORMATS	TIFF, TIFF (multipage), JPEG, JPEG2000, BMP, PDF (multipage), PDF, PNG, DNG	
SOFTWARE	Limb Capture software operated with Windows 10, 11 and higher versions	
DIMENSIONS (L X L X H)	Scanner with book cradle (BC): 2000 mm x 1350 mm x 2100 mm / 78,7" x 53,2" x 82,7"	
WEIGHT	Scanner : 116,9 lb	
POWER REQUIREMENTS	100V – 240V AC, 50/60 Hz	
WARRANTY	1 year on spare parts and software updates (can be extended)	
CERTIFICATIONS	CE/FCC part 15 conformity, Low voltage electrical safety EN 62368-1, radioelectrical disturbances EN55032, EN61000-3-2, EN61000-3-3, electromagnetic immunity EN 55024	



The scanner is compatible with all digisolution software



SOLE Distributor in MALAYSIA & SEA :
EXCEL ENVIROTECH RESOURCES SDN BHD
UNIT A717, LEVEL 7, BLOCK A KELANA SQUARE, NO. 17 JALAN SS 7/26,
KELANA JAYA, 47301 PETALING JAYA SELANGOR
EMAIL : sales@excel-envirotech.com TEL : 03-7882 9333 / 03-7887 6868

+6018 - 388 6666

