



CopiBook OS A1+

*Combining large format
and productivity*



Digibook

Heritage digitization



CopiBook Open System A1+

Scanners with matrix sensors

Automatic Book cradle

Automatic glass opening and closing
Motorized independent trays

✓ *Effortless scanning*

Secure pressure adjustment system

✓ *Document preservation*

Book thickness and weight: up to 20 cm thick
without glass and up to 20 Kg

✓ *Adaptable to various document types*

Optimized Lighting system

LED lighting **without UV and IR emissions**

✓ *Document preservation*

Light **diffuser**

✓ *No dazzling light for operators*



Outstanding Image quality

9 cm depth of field

✓ *Extended sharpness to capture every detail*

2 cameras available

✓ *Configurations to suit every need*



EAGLE Camera

High resolution 300 dpi
71 Mpixels
BoostPic



E-XTRA Camera

High resolution 400 dpi
156 Mpixels
BoostPic and TrueColor™



High level of *productivity and ergonomics*

Scan time : <1s at 300 dpi

Cycle time : <4s at 300 dpi

✓ *Identical scan times for all formats*

Real-time preview

Automatic calibration

✓ *Saves time at every stage of digitization*

Book cradle can be removed

✓ *Allows the user to scan A1+*

Scan Format

A1: Up to 844 x 598 (mm) / (33.2" x 23.5")
with glass

A1+: Up to 1065 x 754 (mm) / (41.9" x 29.7")
without book cradle

BoostPic

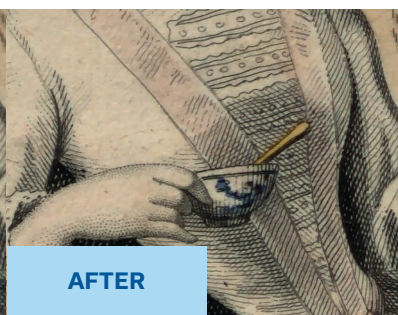
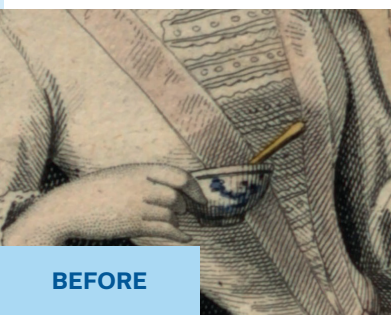
Make the finest details

Better sharpness / Lower-noise / Higher-contrast



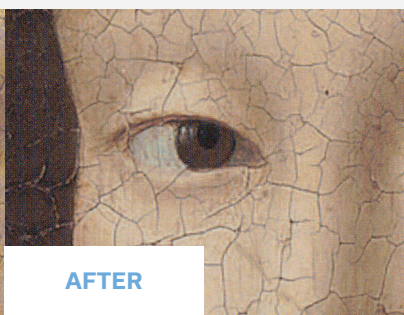
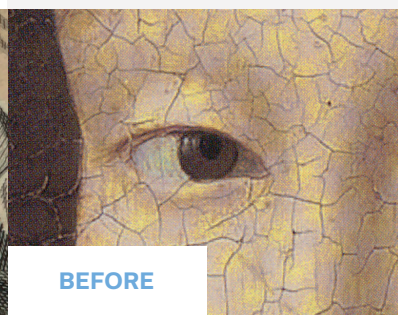
True to life color digitization

No moiré pattern



BEFORE

AFTER



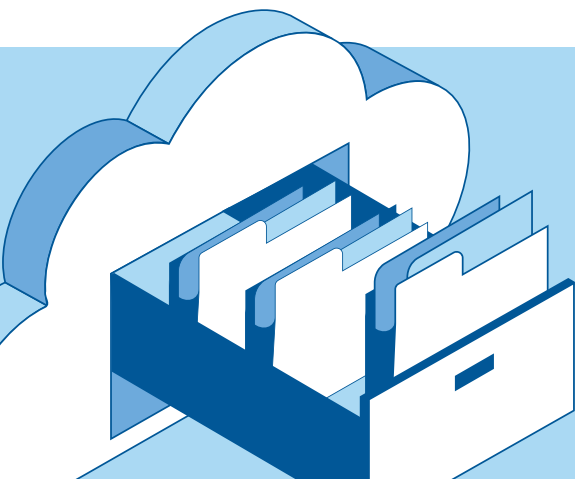
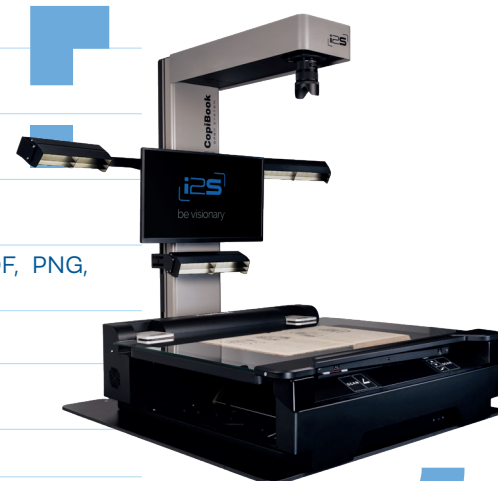
BEFORE

AFTER

CopiBook Open System A1+

Technical specifications

TYPE	A1+ format planetary book scanner
CAMERA	Eagle with 71 MPixels matrix sensor, And E-xtra camera with 156 Mpixels Autofocus No mechanical shutter Color, Grayscale, Black & White
OPTICAL RESOLUTION	300x300 dpi, 400x400 dpi Up to 800 dpi maximum resolution
SCAN TIME	< 1 sec at 300 dpi in color < 4 sec at 400 dpi in color
CYCLE TIME	< 5 sec at 300 dpi in color < 11 sec at 400 dpi in color
FILE FORMATS	TIFF, TIFF (multipage), JPEG, JPEG2000, BMP, PDF (multipage), PDF, PNG, DNG
SOFTWARE	Limb Capture software operated with Windows 10, 11.
DIMENSIONS (L X L X H)	Scanner with book cradle (BC) : 1245 mm x 1513 mm x 1405 mm / 49" x 59.6" x 55.3"
WEIGHT	Scanner : 80kgs / 176.4 lbs
POWER REQUIREMENTS	100V - 240V AC, 50/60 Hz
WARRANTY	1 year on spare parts and software updates (can be extended)
CERTIFICATIONS	CE/FCC part 15 compliant, Electrical safety low current EN 62368-1, Radio interference EN55032, EN61000-3-2, EN61000-3-3, Electromagnetic immunity EN 55024



The scanner is compatible with all digisolution software



SOLE Distributor in MALAYSIA & SEA :
EXCEL ENVIROTECH RESOURCES SDN BHD
UNIT A717, LEVEL 7, BLOCK A KELANA SQUARE, NO. 17 JALAN SS 7/26,
KELANA JAYA, 47301 PETALING JAYA SELANGOR
EMAIL : sales@excel-envirotech.com TEL : 03-7882 9333 / 03-7887 6868

+6018 - 388 6666

