



CopiBook OS A2+

*The Reliable, High-Performance
Book Scanner*



Digibook

Heritage digitization



CopiBook Open System A2+

Scanners with matrix sensors

Modular Book cradle

Several choices of book cradle:

Advanced
Book cradle



Manual glass and independent trays

Professional
Book cradle



Semi-automatic glass and motorized independent trays

Ability to scan without a book cradle
✓ *Scanning up to A2+*

Secure pressure adjustment system
✓ *Document preservation*

Book thickness and weight: up to 20 cm thick without glass and up to 10 Kg
✓ *Adaptable to various document types*



Optimized Lighting system

LED lighting without UV and IR emissions
✓ *Document preservation*

Light diffuser
✓ *No dazzling light for operators*

The highest level of *image quality*

9 cm depth of field

✓ *Extended sharpness to capture every detail*

3 cameras available

✓ *Configurations to suit every need*



E-HRIS Camera

400 dpi standard
71 Mpixels



EAGLE Camera

High resolution 400 dpi
71 Mpixels
BoostPic



ROCK Camera

600 dpi
156 Mpixels
BoostPic and TrueColor™

CopiBook OS A2 is compliant with the following standards **ISO 19264-1/B**, **Metamorfoze Light** and **FADGI 3*** (EAGLE and ROCK cameras)



High level of *productivity and ergonomics*

Scan time : <1s à 400 dpi

Cycle time : <3s à 400 dpi

✓ *Unequaled productivity*

Real-time **preview**

Automatic calibration

✓ *Saves time at every stage of digitization*

Scan Format

A2: Up to 632 x 449 (mm) / (24.88" x 17.68")
with glass

A2+: Up to 723 x 512 (mm) / (28.46" x 20.16")
without book cradle

BoostPic

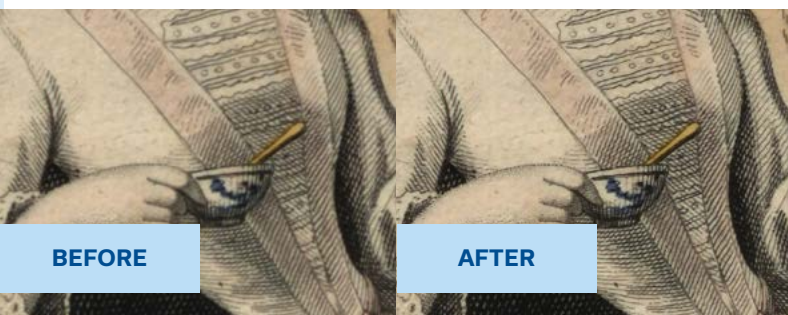
Make the finest details

Better sharpness / Lower-noise / Higher-contrast



True to life color digitization

No moiré pattern



BEFORE

AFTER



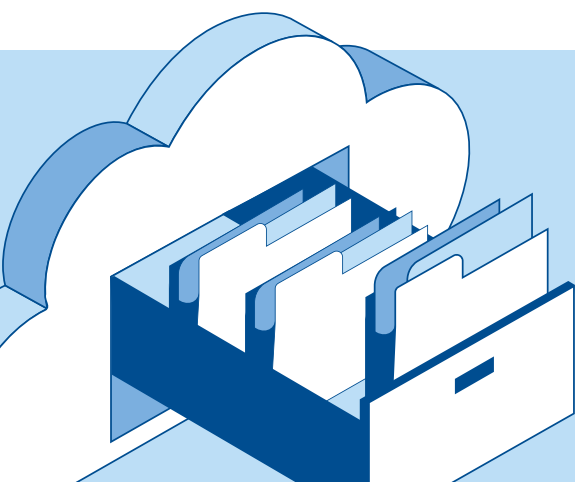
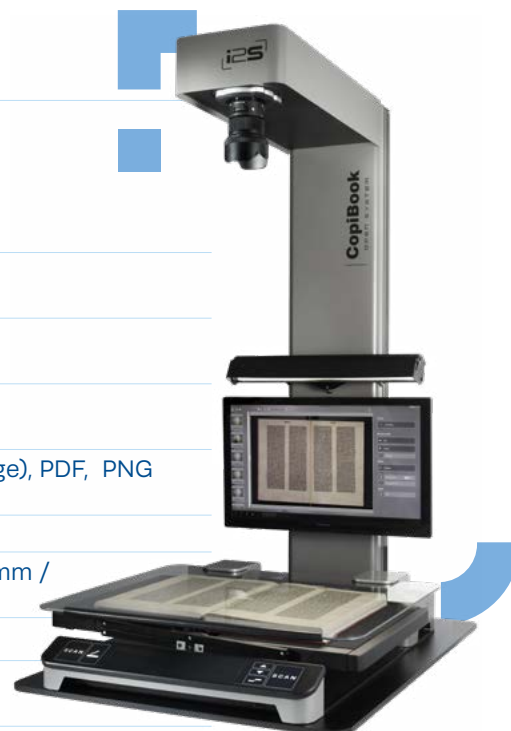
BEFORE

AFTER

CopiBook Open System A2+

Technical specifications

TYPE	A2+ format planetary book scanner
CAMERA	Eagle or E-HRIS with 71 MPixels matrix sensor, And Rock camera with 156 MPixels Autofocus No mechanical shutter Color, Grayscale, Black & White
OPTICAL RESOLUTION	400x400 dpi, 600x600 dpi Up to 1000 dpi maximum resolution
SCAN TIME	<1 sec at 400 dpi in color < 3 sec at 600 dpi in color
CYCLE TIME	<3 sec at 400 dpi in color < 8 sec at 600 dpi in color
FILE FORMATS	TIFF, TIFF (multipage), JPEG, JPEG2000, BMP, PDF (multipage), PDF, PNG DNG
SOFTWARE	Limb Capture software operated with Windows 10, 11.
DIMENSIONS (L X L X H)	Scanner with book cradle (BC) : 1002 mm x 740 mm x 1364 mm / 39.4" x 29.1" x 53.7"
WEIGHT	Scanner : 53kg / 116.9 lb
POWER REQUIREMENTS	100V - 240V AC, 50/60 Hz
WARRANTY	1 year on spare parts and software updates (can be extended)
CERTIFICATIONS	CE/FCC part 15 compliant, Electrical safety low current EN 62368-1, Radio interference EN55032, EN61000-3-2, EN61000-3-3, Electromagnetic immunity EN 55024



The scanner is compatible with all digisolution software



SOLE Distributor in MALAYSIA & SEA :
EXCEL ENVIROTECH RESOURCES SDN BHD
UNIT A717, LEVEL 7, BLOCK A KELANA SQUARE, NO. 17 JALAN SS 7/26,
KELANA JAYA, 47301 PETALING JAYA SELANGOR
EMAIL : sales@excel-envirotech.com TEL : 03-7882 9333 / 03-7887 6868



+6018 - 388 6666

