



# eScan OS A3+

*Modular, Fast, Reliable*



Digibook

*Heritage digitization*

# eScan Open System A3+

*Scanners with matrix sensors*

## Book cradle *modular*

Two book cradle available:

Book cradle  
*classic*



Manual, without glass

Book cradle  
*professional*



Motorized, semi-automatic glass

✓ *Scanner modularity*

Book thickness and weight:  
up to 15 cm and up to 15 Kg

✓ *Adapted to several document types*



## *Optimized* Lighting system

**Uniform LED lighting** throughout the book cradle

✓ *Optimum coverage of the entire scene*

**No flashing**

✓ *Improved operator comfort*

# The highest level of image quality

Camera 71 Mpixels

✓ Optical resolution of 400 dpi in A3+ format

MTF at 400 dpi: >85% resolution efficiency (6,7lp/mm)

✓ «Professional» configuration

MTF at 300 dpi: 100% resolution efficiency (5,9lp/mm)

✓ «Classic» configuration

2 cameras available



**Camera E-HRIS**  
400 dpi standard



**Camera EAGLE**  
High resolution 400 dpi  
BoostPic

eScan OS A3 is compliant with ISO 19264-1/B, Metamorfoze Light and FADGI 3\* standards. (EAGLE camera).



## Scan Format

A3+: up to 560 x 400 (mm) / (22" x 15.7")

## High level of productivity and ergonomics

Scan time: <1s at 400 dpi

Cycle time: <3s at 400 dpi

✓ Similar scan times for all formats

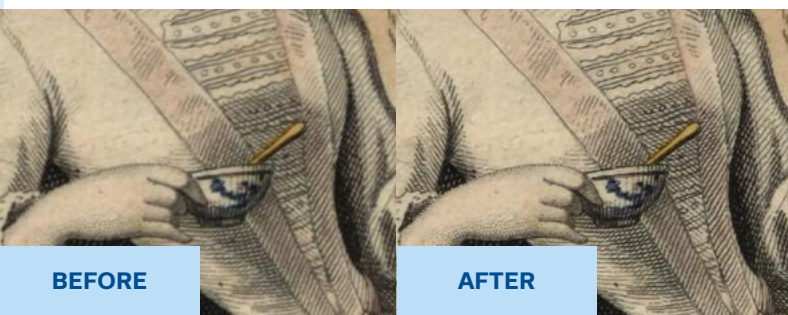
Automatic format detection before scanning  
Self-calibration

✓ High-performance A3 scanner

## BoostPic

Make the finest details visible

*Better sharpness / Lower-noise / Higher contrast*



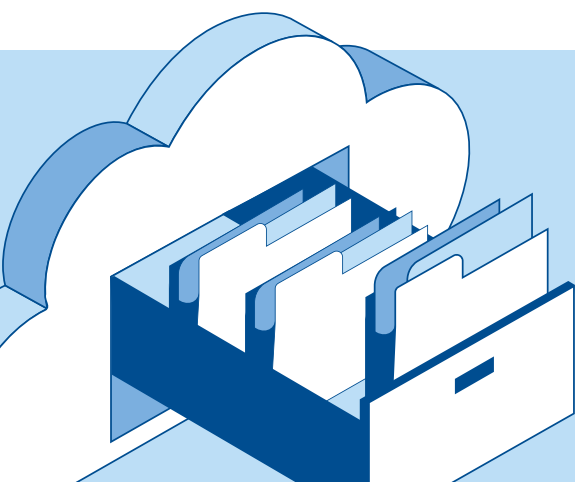
BEFORE

AFTER

# eScan Open System A3+

## Technical specifications


TYPE	A3+ format planetary book scanner
CAMERA	EAGLE or E-HRIS with 71 MPixels matrix sensor Autofocus No mechanical shutter Color, Grayscale, Black & White
OPTICAL RESOLUTION	400x400 dpi up to 600x600 dpi
SCAN TIME	< 1 sec on A3+ format, 400 dpi in color
CYCLE TIME	< 3 sec on A3+ format, 400 dpi in color, TIFF files
FILE FORMATS	TIFF (multipage), JPEG, JPEG2000, BMP, PDF (multipage), PNG, DNG
SOFTWARE	Limb Capture software operated with Windows 10, 11.
DIMENSIONS (L X I X h)	Scanner with book cradle (BC): 1200 mm x 790 mm x 1330 mm
WEIGHT	Scanner: 65 kg
POWER REQUIREMENTS	100V - 240V AC, 50/60 Hz
WARRANTY	1 Year on spare parts and software updates (extension possible).
CERTIFICATIONS	CE/FCC part 15 compliant, Electrical safety low current EN 62368-1, Radio interference EN55032, EN61000-3-2, EN61000-3-3, Electromagnetic immunity EN 55024



The scanner is compatible with all digisolution software



SOLE Distributor in MALAYSIA & SEA :  
EXCEL ENVIROTECH RESOURCES SDN BHD  
UNIT A717, LEVEL 7, BLOCK A KELANA SQUARE, NO. 17 JALAN SS 7/26,  
KELANA JAYA, 47301 PETALING JAYA SELANGOR  
EMAIL : sales@excel-envirotech.com TEL : 03-7882 9333 / 03-7887 6868

 +6018 - 388 6666

